



BBW 2030

EN / 4-in-1 Multifunction Baby Bottle Warmer ■ User's manual



Table of Contents

Introduction	4
Safety instructions and important notes	5
Description	8
Operation	10
Time preset	15
Cleaning the appliance and removal of limescale deposits	16
Technical specifications	17
Explanation of symbols used on the product, its accessories and packaging	18
Instructions and information about the handling of used packaging	19
Affirmation about the issuance of a Declaration of Conformity	19

Introduction

- The Bayby BBW 2030 Multi-function Baby Bottle Warmer is a unique aid for caring for and feeding your baby. This single appliance offers 4 functions:
- **Baby bottle warmer**
Easy to use for quickly heating up milk or water. Suitable for all types of baby bottles.
- **Steam cooking**
You can use the steam cooking function to cook meals.
- **Sterilisation of baby bottles or their accessories**
Sterilises baby bottles or accessories such as baby bottle nipples, lids and other parts of the baby bottle.
- **Timer**
Enables the warming function to be set 10 minutes to 15 hours in advance.

Safety instructions and important notes

- Only use the baby bottle warmer in accordance with the instructions included in this user's manual. Not adhering to these instructions may result in the incorrect operation of the bottle warmer or its damage. Keep this user's manual for future use.
- Only use the appliance indoors and do not expose it or its accessories to direct sunlight.
- Keep this appliance and the power cord out of reach of children that are younger than 8 years of age.
- Do not submerge the power cord, plug or the appliance in water or in any other liquid.
- Do not leave the power cord in the vicinity of hot surfaces.
- Only connect the appliance to a grounded power socket. Always check that the plug is properly inserted into the power socket.
- Before connecting the appliance, check that the voltage specified on the bottom part of the appliance corresponds to the voltage in the local power grid.
- If it is necessary to use an extension cord, check that the power cord is grounded with a nominal value of at least 10 amperes.
- Do not use the appliance if the power plug, power cord or the appliance itself is damaged. If the power cord is damaged, have it replaced at an authorised service centre to avoid a possibly dangerous situation.

- Do not place the appliance on a hot gas or electric stove or a hot oven or in their vicinity.
- The appliance may be used by children up to 8 years of age and persons with limited physical, sensory or mental abilities or by persons with insufficient experience and knowledge only when under supervision or after they have been instructed about the safe use of the appliance and when they are aware of all risks associated with using the appliance. Cleaning and user maintenance must not be performed by children younger than 8 years of age and that are unsupervised. Children must not play with the bottle warmer.
- Clean the bottle warmer according to the instructions contained in chapter Cleaning the appliance and removal of limescale deposits.
- Do not preheat the appliance.
- Hot water may cause serious scalding. So be very careful when there is hot water inside the bottle warmer.
- Accessible surfaces of the appliance may heat up during operation. The lid is hot after use, be careful, scalding hazard.
- Do not move the appliance if it contains hot water.
- As soon as the food or milk reaches the required temperature, remove the bottle or container from the bottle warmer. If you leave the food or milk in the bottle warmer, its temperature will rise.

- Before you start feeding a child, always check the temperature of the food.
- Do not touch the bottle warmer if it accidentally falls into water. Immediately disconnect the power plug from the power socket and do not use the appliance. Contact an authorised service centre.

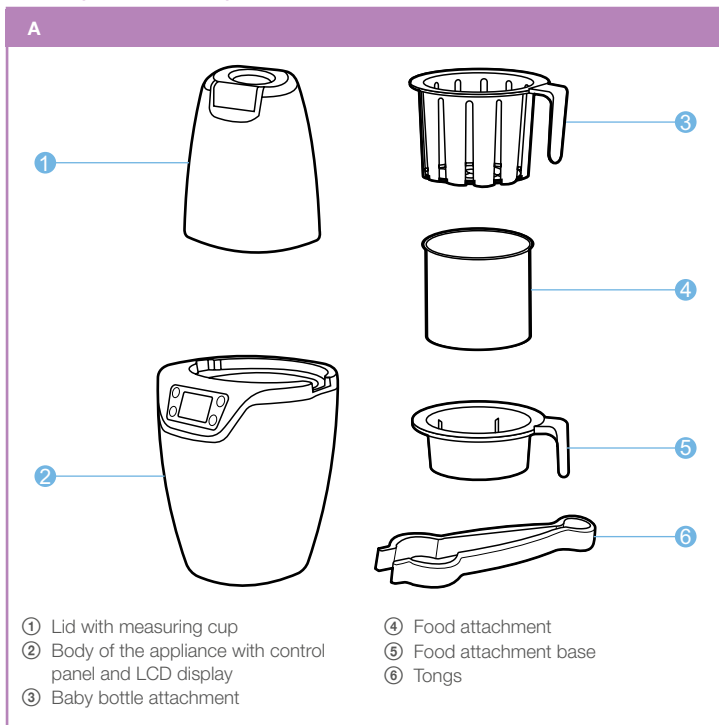
**Attention:**

Do not leave the bottle warmer without supervision when it is connected to a power socket.

- When not using the appliance, disconnect it from the power socket.
- Before cleaning and after every use, allow the appliance to cool down.
- Follow the instructions for removing limescale deposits to prevent irreparable damage.
- Do not attempt to open or repair the appliance yourself. Have all repairs performed at an authorised service centre. By tampering with the appliance you risk voiding your legal rights arising from unsatisfactory performance or quality warranty.
- We recommend saving the original box, packaging material, receipt and responsibility statement of the vendor or warranty card for the duration of warranty. It is appropriate to transport the bottle warmer in its original box.

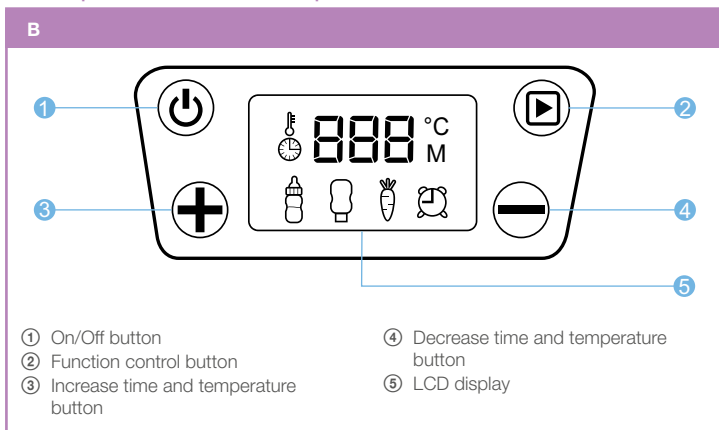
Description

Description of the product

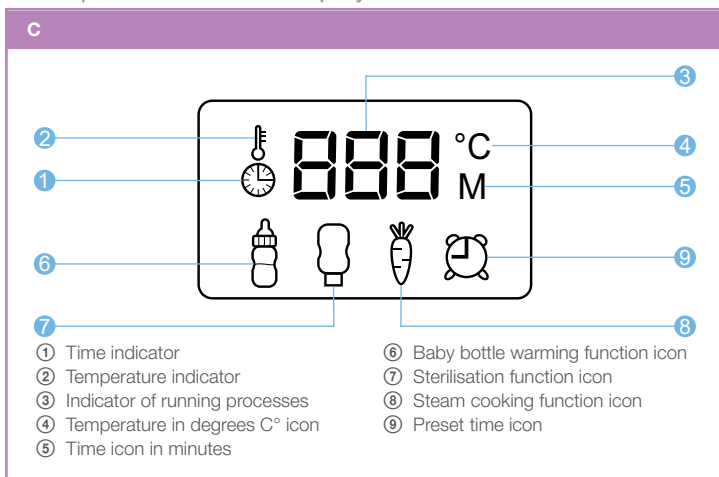


- All parts, except for the stainless steel heating plate, contained inside the body of the appliance A② are made from a material that does not contain BPA (Bisphenol A).

Description of the control panel



Description of the LCD display



Operation



Attention:

Never use the bottle warmer without water in the heating tank!

Stand the bottle warmer on a horizontal and stable surface.

The steam that is released during the warming process is hot. Always keep your hands away from the bottle warmer during the warming process.

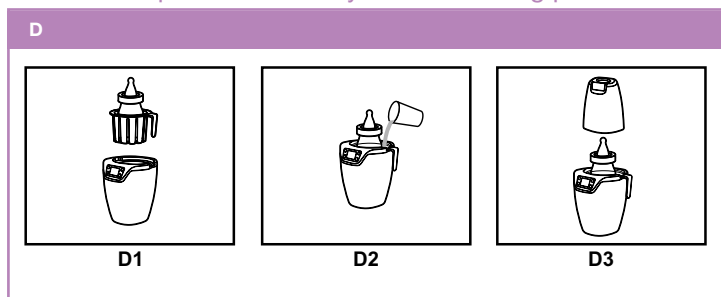
Warming up baby bottles

- Put the baby bottle attachment A③ into the body of the appliance A② and then put the baby bottle into it (figure D①).
- Pour the corresponding amount of water into the body of the appliance A② using the measuring cup A① (figure D②). **The amount of water should be equal to the amount of milk in the baby bottle.**
Always place a fully assembled baby bottle into the bottle warmer including its screw top and nipple (without the dust cap). Make certain that you pour water into the bottle warmer before turning it on. Never allow water to rise above the neck of the bottle or to spill over the edge of the bottle warmer. The water must not exceed the "MAX" level marked inside the body of the appliance.
- Cover the bottle warmer with the lid A①, (figure D③). Check that the lid A① has properly adhered to the body of the appliance A②.
- Start the bottle warming function by pressing the On/Off button of the appliance B① and subsequently selecting the baby bottle warming function B② and C⑥. The LCD display shows the preset time of 3 minutes.
The warming time can be decreased or increased using buttons B③, B④. After three seconds, if no other functions are set, the bottle warmer will start the warming function and a countdown will be shown on the LCD display.
- When the bottle warming process is complete, the bottle warmer will make a sound and the LCD display will show the temperature of the warmed milk C④.
- Turn off the appliance and disconnect it from the power socket.
- To remove items from the bottle warmer, use the tongs A⑥, which are a part of the product.
- Always test the food once it reaches the desired temperature, immediately remove it from the bottle warmer.
Shake the baby food or milk after taking it out of the bottle warmer. Check the temperature of the food or milk by dripping a little on your wrist.
- Allow the bottle warmer to cool down before using it again. The bottle warming function can be repeated after 30 minutes.

**Attention:**

If you leave the bottle in the bottle warmer longer than specified in the table, the milk may overheat. If you overheat breast milk, valuable nutrients and vitamins may be lost.

Visual description of the baby bottle warming process



Adhere to the precise amount of water depending on the amount of food in the baby bottle based on the information in the "Reference baby bottle warming table" below and use it to determine the time necessary for warming up the milk. The amount of water should be equal to the amount of milk in the baby bottle.

Reference baby bottle warming table

Reference baby bottle warming table			
Heat to 37 °C		Glass bottles	PP bottles
Volume of food in the baby bottle	Starting temperature of the liquids in the baby bottle	Approximate warming time	
50-100 ml	5-10 °C	4 min	6 min
100-125 ml	5-10 °C	10 min	15 min
50-100 ml	23±2 °C	3 min	4 min
100-125 ml	23±2 °C	7 min	12 min
125-250 ml	23±2 °C	10 min	14 min

Note:

The time necessary for warming up the milk depends on the amount of milk being warmed up and its initial temperature, for example room temperature (20 °C) or the temperature after being removed from a refrigerator (5 °C).

- Due to the possible consistencies of baby food, the values provided above are only indicative in nature.
- In the event that you find that the baby food is not heated sufficiently, restart the warming cycle and next time you may add a little more water into the body of the appliance A③.
- If on the other hand you find that at the end of the warming cycle that the baby food is too hot, allow the food to cool down to the required temperature, check it by tapping it against your wrist and next time you can pour a little less water into the heating tank A②.

**Attention:**

The steam that is released during the warming process is hot. Always keep your hands away from the bottle warmer during the warming process. Be careful of the higher temperature when removing the lid. If you wish to turn the bottle warmer off at any time, press button B① to the OFF function and disconnect the power cord plug from the power socket.

Sterilisation

- Pour 40 ml of water into the body of the appliance A②.
- Place the baby bottle attachment A③ into the body of the appliance A② (figure E①) and put the baby bottle without the nipple, screw ring or lid into it upside down (figure E②).
- Cover the bottle warmer with the lid A①, (figure E③). Check that the lid A① has properly adhered to the body of the appliance A②.
- Start the sterilisation function by pressing the On/Off button of the appliance B① and subsequently selecting the sterilisation function B② and C⑦. The LCD display shows the preset time of 10 minutes.
The sterilisation can be decreased or increased using buttons B③, B④. After three seconds, if no other functions are set, the bottle warmer will start the sterilisation function and a countdown will be shown on the LCD display.
- After the sterilisation function has finished, the bottle warmer will make a sound.
- Turn off the appliance and disconnect it from the power socket.
- Allow the bottle warmer to cool down before using it again. The sterilisation function can be repeated after 20 minutes.

Note:

In this appliance, it is also possible to sterilise nipples, baby bottle lids, etc. The procedure is the same as for the sterilisation of baby bottles. Sterilised products must always be placed into attachment A③.

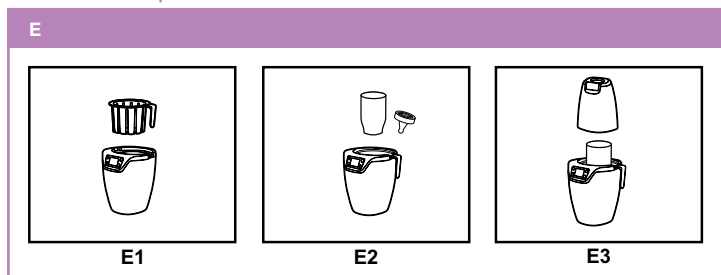
**Attention:**

The steam that is released during the warming process is hot. Always keep your hands away from the bottle warmer during the warming process. Be careful of the higher temperature when removing the lid.

Be very careful not to scald yourself when removing sterilised items from the bottle warmer, they may be hot. To remove items from the bottle warmer, use the tongs A⑥, which are a part of the product.

If you wish to turn the bottle warmer off at any time, press button B① to the OFF function and disconnect the power cord plug from the power socket.

Visual description of sterilisation



Steam cooking

- Pour 170 ml of water into the body of the appliance A②. Make certain that you pour water into the bottle warmer before turning it on. Never allow water to rise above the neck of the bottle or to spill over the edge of the bottle warmer. The water must not exceed the "MAX" level marked inside the body of the appliance.
- Put the ingredients into the food attachment A④ and then put this into the food attachment base A⑤, (figure F①). Then put both into the body of the warmer A② (figure F②).
- Cover the bottle warmer with the lid A①, (figure F③). Check that the lid A① has properly adhered to the body of the appliance A②.

- Start the steam cooking function by pressing the On/Off button of the appliance B① and subsequently selecting the cooking function B② and C⑧. The LCD display shows the preset time of 20 minutes.
- The cooking time can be decreased or increased using buttons B③, B④ see Reference steam cooking table. After three seconds, if no other functions are set, the bottle warmer will start the cooking function and a countdown will be shown on the LCD display.
- After the cooking function has finished, the bottle warmer will make a sound.
- Turn off the appliance and disconnect it from the power socket.
- Allow the bottle warmer to cool down before using it again. The steam cooking function can be repeated after 25 minutes.

Note:

Food must be placed into the steam cooking attachment and never directly into the body of the appliance A②.

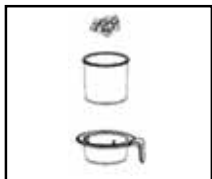
**Attention:**

The steam that is released during the warming process is hot. Always keep your hands away from the bottle warmer while it is running. Be careful of the higher temperature when removing the lid. Be very careful not to scald yourself when removing attachments or food from the bottle warmer, they may be hot. To remove items from the bottle warmer, use the tongs A⑥, which are a part of the product.

If you wish to turn the bottle warmer off at any time, press button B① to the OFF function and disconnect the power cord plug from the power socket.

Visual description of the steam cooking function

F



F1



F2



F3

Food type	Food	Approximate steam cooking time
Fruit	Apple, pear	7 min
	Peach, citruses, plum	12 min
	Pineapple	18 min
Vegetables	Potatoes, broccoli, onion, asparagus, cauliflower, tomato, spinach	12 min
	Celery, zucchini, pumpkin, carrot	18 min
	Peas	25 min
Meat	Poultry, beef, lamb, pork, veal	25 min
Fish	Salmon, flounder, trout, cod	12 min

Note:

The cooking time may differ depending on the initial food temperature and its consistency and amount. The amount of water can be adjusted depending on the amount of food. If you find that the food is not completely cooked, next time you can pour more water into the bottle warmer.

Time preset

- You can set the warming, sterilisation and steam cooking functions by 10 minutes to 15 hours in advance and the bottle warmer will then automatically start any function at the preset time.
- Follow the instructions in the user's manual for the individual warming, sterilisation and steam cooking functions.
- Start the timer function by pressing the On/Off button of the appliance B① and subsequently selecting the time preset function B② and C⑨. The LCD display shows the preset time of 10 minutes.
You can decrease or increase the time period in 10-minute increments using buttons B③, B④.
After three seconds, if no other functions are set, the bottle warmer will display the selected function and the preset time on the LCD display.
- When the bottle warmer starts the selected function at the preset time, the LCD display will automatically switch to power-saving mode. Pressing any button will switch the LCD display to standard mode.

- It will automatic start the set function at the preset time and after it finishes it will notify you by making a end of process sound.
- Turn off the appliance and disconnect it from the power socket.
- If you wish to turn the bottle warmer off at any time, press button B① to the OFF function and disconnect the power cord plug from the power socket.

Cleaning the appliance and removal of limescale deposits

Cleaning

- After every use, disconnect the bottle warmer from the power socket and allow it to cool down.
- For hygiene reasons, pour the water out of the bottle warmer.
- Clean the outer and inner side of the bottle warmer using a damp cloth.



Attention:

Do not clean the bottle warmer, its parts or its accessories using abrasive products, chemical solvents, cleaning products, alcohol or sharp utensils.

Note:

If you used the bottle warmer to warm up baby food or steam cooking, check that there are no spilled baby food remains inside it.



Attention:

Never place the bottle warmer directly under running water or submerge the appliance or its parts and accessories in water or other liquids!
Never wash the bottle warmer in a dishwasher!

- You may clean the lid A①, attachments A③-A⑤, the tongs A⑥ using a sponge or cloth dipped in soapy water or you can wash it in a dishwasher if you place them in the top dishwasher rack.

Removing limescale deposits

- Disconnect the bottle warmer from the power socket and allow it to cool down.
- It is recommended to remove limescale deposits from the bottle warmer every 4 weeks to ensure further effective operation of the appliance.
- Mix 100ml of white vinegar with 100ml of hot water and pour this solution into the body of the appliance A②. Allow this solution to act for approximately 30 minutes and then pour it out.
- Never turn on the bottle warmer while the water and vinegar solution is in the body of the appliance A⑥.
- After emptying out the bottle warmer, repeatedly clean the outer and inner side of the bottle warmer using a cloth. In the event that despite this limescale deposits continue to appear, repeat the limescale removal procedure.

Technical specifications

Model number	BBW 2030
Voltage and power input of the appliance	220-240V ~ 50- 60 Hz, 300 W
Protection class against injury by electrical shock	Protection class I
Operating conditions	Ambient temperature: 7 °C to 37 °C

Explanation of symbols used on the product, its accessories and packaging



This symbol indicates "Important notice".



This symbol indicates that prior to using the product, the user should read the user's manual.



This symbol indicates that this appliance meets all the basic requirements of EU directives related to it.



This symbol serves to designate the production lot number.



This symbol indicates that a fee has been paid to an organisation performing recollection and utilisation of the packaging waste.



This symbol indicates the material from which the packaging is made.



This symbol on products or original documents means that used electric or electronic products must not be added to ordinary municipal waste. For proper disposal, renewal and recycling, hand over these appliances to determined collection points. Alternatively, in some European Union states or other European countries you may return your appliances to the local retailer when buying an equivalent new appliance. Correct disposal of this product helps save valuable natural resources and prevents potential negative effects on the environment and human health, which could result from improper waste disposal. Ask your local authorities or collection facility for more details. In accordance with national regulations penalties may be imposed for the incorrect disposal of this type of waste.

For business entities in European Union states

If you want to dispose of electric or electronic appliances, ask your retailer or supplier for the necessary information.

Disposal in other countries outside the European Union.

This symbol is valid in the European Union. If you wish to dispose of this product, request the necessary information about the correct disposal method from the local council or from your retailer.

Instructions and information about the handling of used packaging

Dispose of used packaging material at a location designated for waste in your municipality.

Affirmation about the issuance of a Declaration of Conformity

FAST ČR, a.s., Czech Republic declares that this product conforms to all requirements and directives of the EU and that a valid declaration of conformity was issued for it.

The Czech language is the original version of the user's manual. Changes to text and technical parameters are reserved.

