

Table of Contents

Introduction	2
Safety instructions and important notes	3
Description	5
Assembling and disassembling the breast pump	7
Power source	8
Using the breast pump	8
Tips and advice for using the breast pump	9
Storing and heating up breast milk	9
Troubleshooting	10
Cleaning and sterilization	11
Storage	12
Technical specifications	12
Explanation of symbols used on the product, its accessories and packaging	12
Disposal of used batteries.	13
Instructions and information about the handling of used packaging	13

Introduction

- It is generally accepted that breast milk is the natural diet for an infant providing the necessary nutrients for growth and protection against infections. A breast milk pump is a suitable additional accessory for breastfeeding mothers. It is particularly useful in situations where the mother is not able to breastfeed at regular intervals or when it is not possible to breastfeed directly from the breast, e.g. due to painful or fissured breast nipples and last but not least it helps alleviate engorgement, a painful condition where breasts are overfill and expression of a certain amount of milk is necessary.
- The BBP 1010 Bayby breast pump is equipped with a two-phase system that simulates an infant's natural sucking action. In the first stage, the fast suction cycle is emulated, by which the breast nipple is stimulated to induce the lactation of breast milk from the mammary gland. This is followed by the second phase where a deeper slower suction action of the infant is emulated. In this phase, breast milk is expressed from the breast nipple and pumped into a bottle. The stimulation and expression intensity level can be adjusted as necessary in 9 levels.
- A clearly arranged LCD display shows the set operating mode, suction intensity, pumping speed and time remaining until automatic shut off. The memory function automatically stores the most recent operating mode and suction intensity settings.
- The 3-in-1 silicon breast pad combines three functions: breast massage, breast pressing and breast milk expression. All these actions take place simultaneously to induce the feeling of natural breastfeeding. The specially designed shape of the silicon breast pad separates milk from air and prevents milk from flowing in reverse.
- The basic accessories for the breast pump include a wide-neck baby bottle and a bottle adaptor enabling the use of narrow-neck baby bottles.
- Thanks to its compact dimensions, you can always have the breast pump on hand. Because of its quiet operation and battery or power adaptor powered operation, it can be used both at home and when travelling.

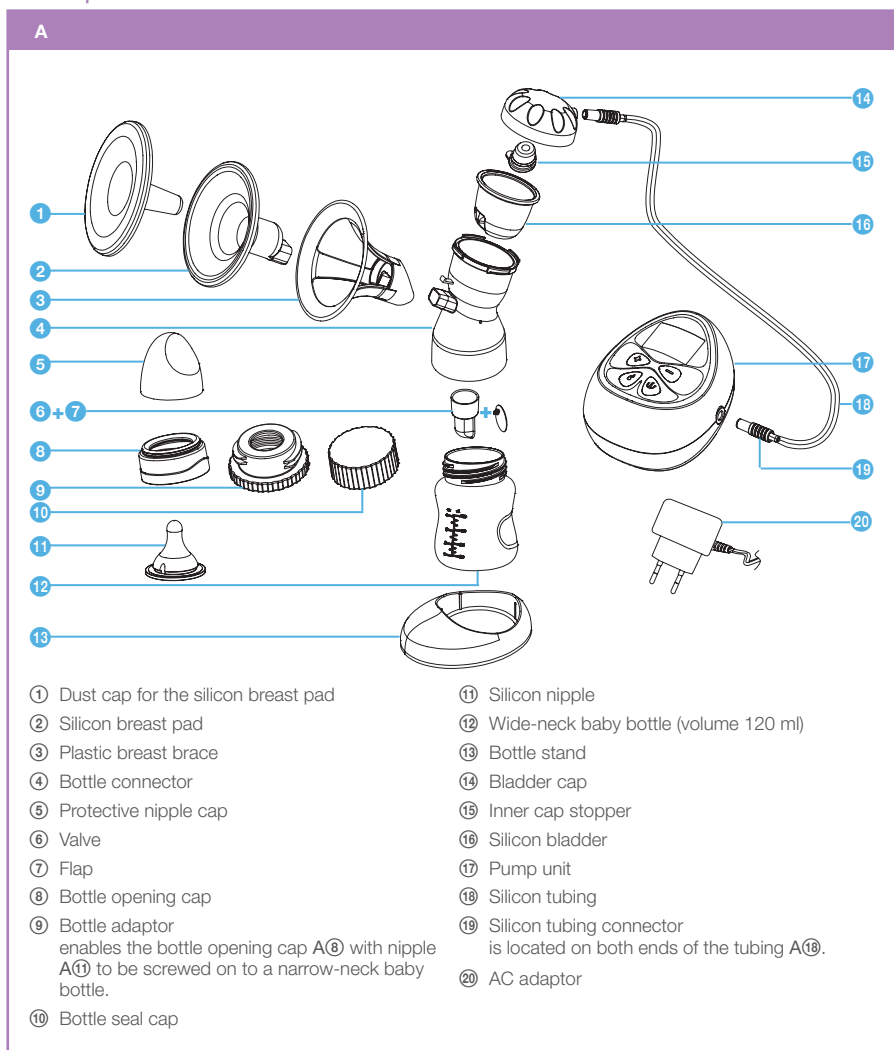
Safety instructions and important notes

- Only use the breast pump in accordance with the instructions included in this user's manual. Not adhering to these instructions may result in incorrect operation of the breast pump or may damage it. Keep this manual for future use.
- This breast pump may be handled by children 8 years of age and older or by persons with physical or mental impairments or by inexperienced persons, if they are properly supervised or have been informed how to handle it in a safe manner and understand the potential dangers. Children must not play with the breast pump and its accessories.
- Only use the breast pump with the original power adaptor and accessories.
- Before connecting the power adaptor to a power socket, make sure the voltage stated on its rating label corresponds to the voltage in the power socket.
- For hygiene reasons, the breast pump is intended for repeated use by only a single user.
- Do not start the breast pump if there is water inside the silicon tubing **A⑱**.
- Do not use the breast pump outdoors, do not expose it to direct sunlight or put it down on an electric or gas stove.
- The breast pump is not intended to be used in the shower or bath.
- Do not use the breast pump in the event of excessive fatigue or sleepiness or while driving a motor vehicle.
- We do not recommend using the breast pump during pregnancy as this could induce childbirth.
- Do not attempt to take the breast pump off the breast while milk is being expressed. First, turn off the breast pump and only thereafter release the breast from the silicon breast pad **A②**.

- In the event that you feel an unpleasant or painful pressure while the milk is being expressed, turn off the breast pump and take the breast out of the silicon breast pad **A②**. Perform a gentle massage and heat up the breast in the shower and then repeat the expression process. If problems persist, please consult a lactation consultant or your doctor.
- Do not leave the breast pump without supervision when it is connected to a power socket.
- If the breast pump is powered using an external power supply, always disconnect it from the power socket after use.
- Clean and sterilize the breast pump according to the instructions contained in chapter "Cleaning and sterilization". Never submerge the pump unit or power adaptor in water or any other liquids or sterilize these parts because they do not come into contact with the breast milk or the breast.
- Cleaning may be performed by children if they are older than 8 years of age and under supervision. However, they must not perform sterilization due to the risk of scalding.
- Do not use the breast pump if it is in any way damaged, if its power adaptor is damaged or if any part that must not be submerged in water fell into water or another liquid.
- Have all repairs or adjustments performed at an authorised service centre. By tampering with the appliance you risk voiding your legal rights arising from unsatisfactory performance or quality warranty.
- We recommend saving the original box, packaging material, receipt and responsibility statement of the vendor or warranty card for the duration of warranty. It is appropriate to move the breast pump in its original box.

Description

Description of accessories

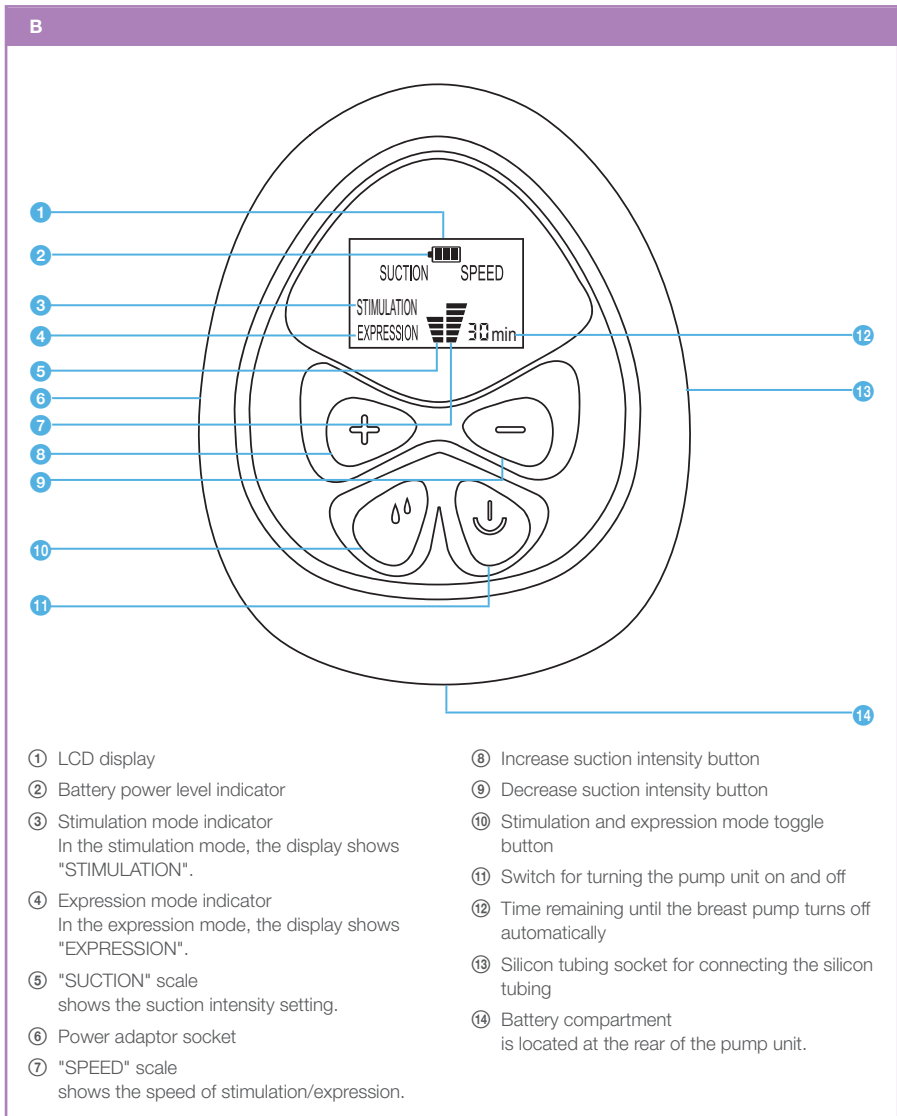


Replacement accessories contained in the original packaging of the breast pump:

1 pc silicon tubing A¹⁸ + 2 pcs silicon tubing connectors A¹⁹, 2 pcs flap A⁷.

Parts A¹–¹⁹ are made from a material that does not contain BPA (Bisphenol A). On the pump unit A¹⁷ this relates to the cover and control panel.

Description of the pump unit



Assembling and disassembling the breast pump

- Before you start assembling the breast pump, clean and sterilize the individual parts according to the instructions contained in the chapter "Cleaning and sterilization" and thoroughly wash your hands.



Attention:

Never submerge the pump unit **A17** or power adaptor **A20** in water or any other liquids or sterilize these parts because they do not come into contact with the breast milk or the breast.

- Always assemble the breast pump according to the following instructions. Otherwise the suction intensity could be lowered.
- Check that no part of the breast pump is damaged or worn out and that all parts that will be used during the assembly are dry. Damaged or worn out parts must be replaced for new ones. To order replacement parts, please contact an authorised service centre.
- Insert the silicon pad **A2** into the plastic brace **A3** and push it in all the way. Push down the edge along the plastic brace **A3** with your fingers so that it attaches well.
- Place the plastic brace **A3** with the silicon pad **A2** on to the nozzle, which is located on the front part of the bottle connector **A4**. Tilt the plastic brace **A3** with the silicon pad **A2** slightly upwards so that the lip located on the nozzle slides in first. Then carefully push the plastic brace **A3** on to the bottle connector **A4** so that these parts are connected.
- Into the top part of the bottle connector **A4**, insert the bladder **A16** and put the bladder cap **A14** on to it. Turn the bladder cap **A14** clockwise to properly connect it to the bottle connector **A4**. The hole in the bladder cap **A14** for connecting the silicon tubing **A18** with tubing connector **A19** should point in the opposite direction to the plastic brace **A3** with the silicon pad **A2**. Connect the tubing connector **A19** with the silicon tubing **A18** to the hole in the bladder cap **A14**.



Attention:

There must be no water in the holes of the bladder cap **A14** and inside the silicon tubing **A18** with tubing connector **A19**.

- Connect the flap **A7** to the valve **A6** so that the semicircular-shaped stub on the underside of the flap **A7** fits into the hole of the same shape in the valve **A6**. To ensure that the flap **A7** properly adheres to the valve **A6**, push it down with your thumb.
- Mount the valve **A6** with the flap **A7** into the underside of the bottle connector **A4**.
- Screw the bottle **A12** on to the underside of the bottle connector **A4**. Place the bottle **A12** into the bottle stand **A13**.
- Connect the free end of the silicon tubing **A18** with the tubing connector **A19** to the socket **B13** on the right side of the pump unit **A17**.
- To disassemble the breast pump proceed in the reverse sequence.

Power source

Selecting a power source

External power source

- Only use the power adaptor (output 6V $\overline{-}$, 1A) that is supplied with this breast pump.
- Insert the connector of the power adaptor **A20** to the socket **B6** on the left hand side of the pump unit **A17**. Insert the plug of the power adaptor **A20** into the power socket.

Internal power source

- To power the breast pump using an internal power source, use 4 alkaline batteries type LR6/AA (4 × 1.5 V).
- Make sure that the pump unit **A17** is disconnected from the mains power socket. Remove the cover of the battery compartment **B14** from the underside of the pump unit **A17**. The battery compartment **B14** has a textile band for easier removal of batteries. Prior to inserting the batteries, stretch out this band across the battery compartment **B14** and hold down its free end with your thumb. One by one, insert the batteries into the battery compartment **B14**, ensuring their correct polarity. Release the band and close the cover.

Note:

Do not combine new and used batteries or batteries of various types, e.g. alkaline batteries and rechargeable batteries.

Instructions for using power sources

- After connecting the pump unit **A17** to the external power source or inserting batteries, the display **B1** will show all the segments for a short time and then the pump unit **A17** will switch to Stand-by mode.
- When the breast pump is powered from an internal power source, the display **B1** will show the battery power level **B2**.
- The approximate operating time of the breast pump when new batteries are used is 60 minutes. After approximately 60 minutes of operation, suction intensity will decline even when the battery power level indicator **B2** is still showing 2 segments, the batteries may be weak and it is necessary to replace them with new ones. In the event that the battery power level indicator **B2** is flashing, the battery is almost flat. Replace the batteries.
- When not using the breast pump for an extended period of time, we recommend that you remove the batteries.
- When a pump unit **A17** with inserted batteries is connected to a mains power socket, the external power source will be used as the primary power source. However, we do not recommend powering the pump unit **A17** from a mains power socket with the batteries inserted inside. In such a case, remove the batteries as soon as possible. Before removing the batteries, disconnect the pump unit **A17** from the mains power socket.

Using the breast pump

1. Prior to expressing breast milk, thoroughly wash your hands and wipe the breast with a wash cloth (ideally a disposable type) dipped in clean warm water.
2. Seat yourself comfortably in a chair or armchair and rest your back against a backrest. It is not appropriate to express breast milk when bending over. Take the breast pump out of the bottle stand **A13**. Place the silicon pad **A2** against the breast in such a way that the nipple is located in the middle of the silicon breast pad **A2**. Use your thumb and index finger to hold the silicon pad **A2** against the breast and use the palm of the same hand to support the breast. The silicon pad **A2** must perfectly adhere to the breast.

3. On the control panel of the pump unit **A17**, press the Power On/Off button **B11**. When started for the first time, the display **B1** will show indicator **B3** – "Stimulation" and the breast pump will start the stimulation mode. The stimulation phase takes 2 minutes. The suction intensity in the stimulation phase is set to the lowest level 1. This is indicated by the corresponding number of segments on the scale **B5**. The display **B1** shows the default time of 30 minutes. The remaining time counts down until the breast pump turns off automatically. You may regulate the suction intensity range from 1 to 9 as required. The intensity setting will be shown on the scale **B5**. In the stimulation mode an unchangeable speed is set that corresponds to 100 cycles per minute.
4. Upon completion of the stimulation phase, the breast pump automatically switches to the expression mode. In the event that milk starts to flow sooner, switch the breast pump to the expression mode using button **B10**. The indicator **B4** – "Expression" will be shown on the display **B1**. The suction intensity in the expression mode is preset to level 4 and can be changed in the range from 1 to 9 as required. The scale **B5** will show the corresponding number of segments. The speed of expression changes automatically depending on the suction intensity and is shown on the scale **B7**. The time remaining until automatic shut off is counted down on the display **B1**.
5. To end expression, turn off the pump unit **A17**, by pressing the Power On/Off button **B11**.

Note:

The next time when the breast pump is turned on, the mode in which the breast pump was running prior to being turned off will be renewed as well as the previously set suction intensity. If batteries were removed or the breast pump was disconnected from the external power source before repeat use, the default settings will be renewed as when the breast pump was started for the first time.

6. Take the breast out of the silicon pad **A2** always only after turning off the pump unit **A17**. Place the bottle **A12** with the expressed milk in the bottle stand **A13** to prevent it from being tipped over. When using an external power source, disconnect the pump unit **A17** from the mains power socket. Screw the bottle **A12** out of the bottle connector **A4** and close it with the seal cap **A10**.

Note:

Do not fill the bottle **A12** with more than 120 ml of milk so as to prevent spilling it.

7. When you have finished expressing milk, clean out all parts that were used according to the instructions in chapter Cleaning and sterilization. Clean the bottle **A12** with its seal cap **A10** later, after using up its contents.

Tips and advice for using the breast pump

- If you feel an unpleasant pressure, lower the suction intensity.
- You can express milk first from one breast and then continue expressing milk from the other breast. Prior to taking the breast pump off the breast, it is necessary to turn off the pump unit **A17** and only then release the breast from the silicon pad **A2**. Then you can continue expressing milk from the other breast.
- If you are not successful expressing any milk within the time interval of approx. 5 minutes, stop the breast pump. First try relaxing for a while and warm the breasts up in a warm shower. Then try again to express the milk or postpone it to a later time when more milk has been created.
- Usually, 10 minutes should be sufficient to express the milk. This time is only indicative and may vary from person to person.

Storing and heating up breast milk

- Only breast milk collected using a clean and sterilized breast pump is suitable for storage. Store the milk in sterilized containers designed for storing breast milk or in special disposable breast milk storage bags.
- To prevent the milk from leaking or absorbing other odours from an area in which it is stored, thoroughly close containers or bags before placing them in the refrigerator or freezer.

- Breast milk can be stored for up to 48 hours in a refrigerator (except for the door area) and up to 3 months in a freezer at a temperature of -18 °C.
- If you express the milk gradually and wish to mix the individual batches together into a single container and freeze them, do so no later than within 24 hours. It is only possible to mix batches that are cooled to the same temperature.
- Mark the containers or bags that you place in the freezer with a date.

Note

The bottle A⑩ with the seal cap A⑩ can be stored both in the refrigerator and in the freezer.

- Before this milk is fed to an infant, it should be heated up to a temperature of approx. 37 °C. Frozen milk can be left overnight to defrost in a refrigerator. Defrosting in a refrigerator must not, however, take longer than 24 hours. Heat the milk gently in a baby bottle warmer or in a container with warm water. Do not use boiling water as this could destroy the nutrients through high temperatures. Microwave ovens are not particularly suitable for heating breast milk, namely because of uneven heating.
- All parts of the bottle from which the milk is fed to the infant must be sterilized before they come into contact with the breast milk. To assemble the baby bottle that comes with the breast pump, insert the nipple A⑪ into the bottle opening cap A③ and then attach the bottle opening cap A③ to the bottle A⑩. If you wish to use a narrow-neck bottle to feed an infant, attach the bottle adaptor A⑤ to the underside of the bottle opening cap A③ and then screw this assembly on to the respective bottle. When necessary, you can use a different baby bottle with a nipple. Before feeding, always first shake the bottle and check the temperature of the milk. Dispose of any unused milk that has already been defrosted or heated up.

Troubleshooting

In this chapter you will find possible solutions to problems that you may encounter when using the breast pump. If you are unable to remedy the problem according to the following instructions, please contact an authorised service centre.

- The breast pump does not start when the Power On/Off button B⑪ is pressed.
 - Check that the pump unit A⑦ is connected to a working power socket. In the case where an internal power source is used, check that the batteries were inserted correctly and that they are not flat.
- Low or no suction intensity
 - Check whether the breast pump is correctly assembled and whether the individual parts are properly attached to one another. The connections between the individual parts of the breast pump must not be loose.
 - Weak or almost flat batteries. Even when the battery power level indicator B⑫ is still showing 2 segments, the batteries may be weak and it is necessary to replace them with new ones.
 - Check that the silicon pad A② has properly adhered to the breast. Do not hold the breast pump by the bottle connector A④. Express milk seated with a straight back. Hold the silicon pad A② on the breast with your thumb and index finger and support the breast with your palm.
 - Check that the silicon tubing A⑩ is not twisted and that there is no water inside it. Prior to starting expressing milk, all components must be dry and the silicon tubing A⑩ must not be bent. In the event that there is water inside the silicon tubing A⑩, you may use the dry tubing from the replacement accessories.

Cleaning and sterilization

Cleaning the breast pump

- Make sure that the breast pump is turned off and disconnected from the power socket. Disassemble the breast pump into its individual parts, see chapter Assembling and disassembling the breast pump.

Note:

For the purposes of cleaning it is not necessary to remove the flap A⑦ from the valve A⑥.

- Before first use and after every use
 - Thoroughly wash the dust cap A①, silicon pad A②, plastic brace A③, bladder A⑫, bottle connector A④, bottle A⑬, seal cap A⑩, bottle stand A⑧, bottle opening cap A⑥, bottle adaptor A⑨, nipple A⑪ and nipple cap A⑤ in warm drinking water with a gentle kitchen detergent. Then thoroughly rinse all these parts under clean drinking water and wipe dry with a wiping cloth or allow it to dry naturally. The above mentioned parts may also be washed in a dishwasher (in the top rack).

Note:

In the event that you do not use the bottle opening cap A⑥, bottle adaptor A⑨ or the nipple A⑪ then it is sufficient to clean these parts directly before their planned use.

- Carefully wash the valve with flap A⑥–⑦ in warm drinking water with gentle kitchen detergent. Then rinse it under clean drinking water and dry carefully with a clean wiping cloth or allow it to dry naturally on a clean wiping cloth.
- Wipe the bladder cap A⑭ and the tubing A⑮ with the connected tubing connectors A⑰ using a lightly dampened cloth. Then dry both parts using a clean wiping cloth. These parts do not come into contact with breast milk or with the breast and therefore need not be washed under running water. If you do, however, wash these parts, it will be necessary to wait for the water that entered inside the tubing A⑮ or the bladder cap A⑭ to dry.
- Never wash the pump unit A⑱ or power adaptor A⑳ under running water or submerge in water or any other liquid. If it becomes dirty, you can wipe the surface of the pump unit A⑱ with a clean lightly dampened cloth and then wipe dry.

Sterilizing the breast pump

- Before first use and every subsequent use:
 - Sterilize the dust cap A①, silicon pad A②, plastic brace A③, bladder A⑫, bottle connector A④, valve with flap A⑥–⑦, bottle A⑬, seal cap A⑩, bottle opening cap A⑥, bottle adaptor A⑨, nipple A⑪ and nipple cap A⑤ in a steam sterilizer or boil in a pot for approx. 5 minutes.



Attention:

All parts must be clean prior to sterilization. Cleaning instructions are provided in the preceding subchapter Cleaning the breast pump.

- Neither the bottle stand A⑧ nor the bladder cap A⑭ need to be sterilized because these parts do not come into contact with breast milk or the breast.
- Do not sterilize the pump unit A⑱, power adaptor A⑳, silicon tubing A⑮ and tubing connectors A⑰. These parts do not come into contact with breast milk or the breast. Sterilization would damage the pump unit A⑱ and the power adaptor A⑳.

Storage

- Place the cleaned breast pump into, for example, a clean box or wrap it in a clean wiping cloth to protect it from dust. The breast pump can be stored assembled or disassembled. To protect it against dust, you can fit the dust cap **A①** on to the silicon pad **A②**.

Technical specifications

Model number	BBP 1010
Voltage and power input	6 V $\overline{\text{---}}$, 3.6 W
Power source	power adaptor, model number: GEO101T-0610, input: 100–240 V \sim , 50/60 Hz, 0.3 A, output: 6 V $\overline{\text{---}}$, 1 A or 4 x LR6/AA batteries (not included)
Protection class against injury by electrical shock	Pump unit – protection class III Power adaptor – protection class II
Noise level	60 dB(A)
Suction intensity	Max. –0.016 MPa (stimulation mode) Max. –0.034 MPa (expression mode)
Stimulation/expression speed	100 cycles/minute (stimulation mode) 26 to 60 cycles/minute (expression mode)
Automatic shut off timer	30 minutes
Operational conditions	Ambient temperature: 5 to 40 °C Relative humidity: \leq 90 %

Explanation of symbols used on the product, its accessories and packaging



This symbol indicates that prior to using the product, the user should read the user's manual.



This symbol indicates that this appliance meets all the basic requirements of EU directives related to it.



This symbol indicates that the product has protection class III.



This symbol indicates that the product has protection class II.



This symbol indicates the polarity of the power cord connector.



This symbol indicates that it is a product that may be used indoors only.



This symbol serves to designate the production lot number.



This symbol indicates that a fee has been paid to an organisation performing recollection and utilisation of the packaging waste.



This symbol indicates the material from which the packaging is made.



This symbol on products or original documents means that used electric or electronic products must not be added to ordinary municipal waste. For proper disposal, renewal and recycling hand over these appliances to determined collection points. Alternatively, in some European Union states or other European countries you may return your appliances to the local retailer when buying an equivalent new appliance. Correct disposal of this product helps save valuable natural resources and prevents potential negative effects on the environment and human health, which could result from improper waste disposal. Ask your local authorities or collection facility for more details. In accordance with national regulations penalties may be imposed for the incorrect disposal of this type of waste.

For business entities in European Union states

If you want to dispose of electric or electronic appliances, ask your retailer or supplier for the necessary information.

Disposal in other countries outside the European Union.

This symbol is valid in the European Union. If you wish to dispose of this product, request the necessary information about the correct disposal method from the local council or from your retailer.

Disposal of used batteries



Batteries contain environmentally damaging compounds and therefore do not belong in standard household waste. Take the batteries to an appropriate collection point, which will take care of their ecological disposal. You can obtain the contact for the nearest collection point from you town council or from your retailer.

Instructions and information about the handling of used packaging

Dispose of used packaging material at a site designated for waste in your municipality.

Changes to text and technical parameters are reserved.