



BBM 7005

EN / Digital Audio Baby Monitor ■ User's manual



## Table of Contents

Introduction .....	4
Safety instructions and important notes .....	5
Included contents .....	8
Description of the parent unit .....	9
Description of the baby unit .....	10
Power supply .....	10
Installation location of the units .....	12
General information about using the baby monitor .....	12
Turning the parent unit on and off .....	13
Turning the baby unit on and off.....	13
Pairing the parent and baby and parent units.....	13
Setting the volume intensity .....	14
Two-way communication function.....	14
Night light .....	14
ECO mode .....	14
Troubleshooting .....	14
Cleaning and maintenance .....	15
Technical information .....	15
Instructions and information about the handling of used packaging .....	16
Explanation of symbols used on the product, its accessories and packaging.....	16

## Introduction

- Thank you for selecting the Bayby BBM 7005 Digital Audio Baby Monitor. This digital baby monitor is a great child care accessory that enables you to hear your baby when you are not in the same room. Nevertheless, it is important to understand that it cannot serve as a substitute for responsible adult supervision.
- The sound detected by the baby unit is transmitted to the parent unit. FHSS digital wireless technology is utilised for transmitting the audio signal. This guarantees very high quality audio transmission up to a range of 300 metres.
- The encrypted wireless transmission and automatic available channel selection features guarantee privacy and the peace of mind that you will hear only your child.
- You will be informed about an exceeded signal range, loss of signal or interference by means of an acoustic alarm and the respective LED indicator light.
- Volume can be set to several levels. The parent unit also features a LED volume indicator, which is particularly useful when the parent unit is set to a low volume.
- The baby monitor automatically switches to ECO mode when no audio is being transmitted. This reduces the transmission power to ensure power efficient operation and minimisation of radiation.

## Safety instructions and important notes

- Before first use, thoroughly read the user's manual. Keep this user's manual for future use.



### Attention:

This baby monitor meets all relevant standards and its use is safe when all the instructions contained in this user's manual are followed.

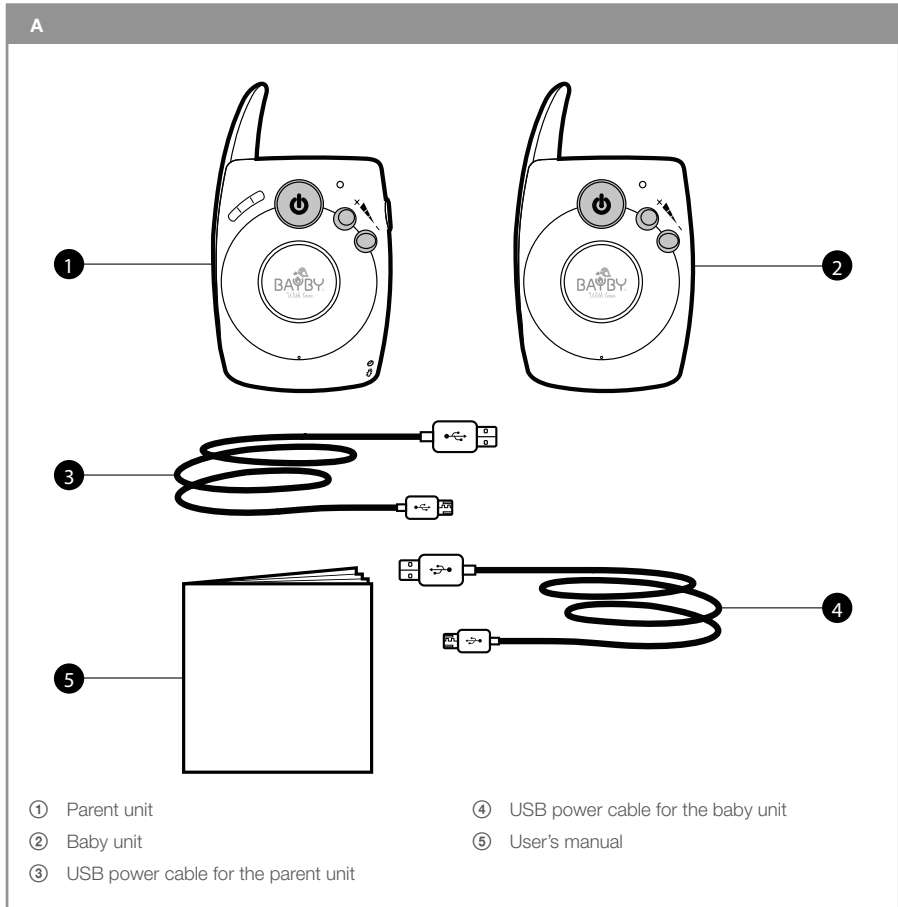
- The baby monitor serves to monitor your child when you are not in the same room and cannot supervise it directly. Nevertheless, it is important to keep in mind that your child's safety comes first and therefore this baby monitor cannot serve as a substitute for supervision by a responsible adult.
- This baby monitor is intended for home (private) use only. It is not intended for commercial purposes.
- After unpacking the baby monitor and its accessories from the packaging material, place the plastic bags in a safe location out of children's reach. In the presence of children, plastic bags may present a suffocation hazard.
- Only use the baby monitor with the original USB power cables that came with it.
- Never use the baby monitor with accessories that are not approved by the manufacturer.
- Before connecting the USB power cable to the USB adapter (not included), make sure the voltage stated on its rating label corresponds to the voltage in the power socket. Always position the USB power cable so that it will not be tripped over.
- The baby monitor may only be operated by adults.
- Children must not play with the baby monitor. Keep the baby monitor, USB power cables and batteries out of children's reach.

- Before first using the baby monitor, acquaint yourself with its functions and before every use, make sure that both the baby and parent unit are in working order and that the batteries are not flat when they are used as a power source.
- Ensure that the baby monitor and the USB power cables do not come into contact with hot surfaces or sharp objects.
- Do not place the baby monitor in the vicinity of water containers or appliances that are sources of heat.
- Do not cover the baby monitor and do not place any items on it.
- Do not use the baby monitor in an excessively dusty or humid environment. Do not subject it to extreme temperature changes and electromagnetic fields.
- Do not submerge the baby monitor and its accessories in water or rinse it under running water.
- Always disconnect the baby monitor from the power socket when not using it and before cleaning it.
- Do not disconnect the USB power cable connected to the USB adapter from the power socket by pulling on the cable. This could damage the power adapter or the power socket. Disconnect the USB power cable from the power socket by pulling on the adapter.
- For powering both of the units from an internal power source, only use type AAA batteries (3× 1.5 V per each unit). ATTENTION – the baby monitor is not to be used as a battery charger.
- When not using the baby monitor for an extended period of time, remove the batteries from both the units.
- Keep the batteries out of children's reach as they may present a hazard to a child. In the event that a child swallows a battery, immediately seek medical help.
- Do not attempt to short circuit or break the battery or throw it into a fire. Do not subject the battery to direct sunlight, fire, etc.
- Do not make any alterations to the baby monitor that would change its electrical or mechanical properties.

- The baby monitor must not be operated with auxiliary amplifiers of high-frequency power or directional antennas.
- Do not use the baby monitor when it is damaged in any way or if the USB power cable is damaged.
- Do not attempt to repair the baby monitor yourself. Have all repairs or adjustments performed at an authorised service centre. By tampering with the product you risk voiding your legal rights arising from unsatisfactory performance or quality warranty.
- We recommend saving the original box, packaging material, receipt and responsibility statement of the vendor or warranty card for the duration of the warranty. It is appropriate to transport the baby monitor in its original box.

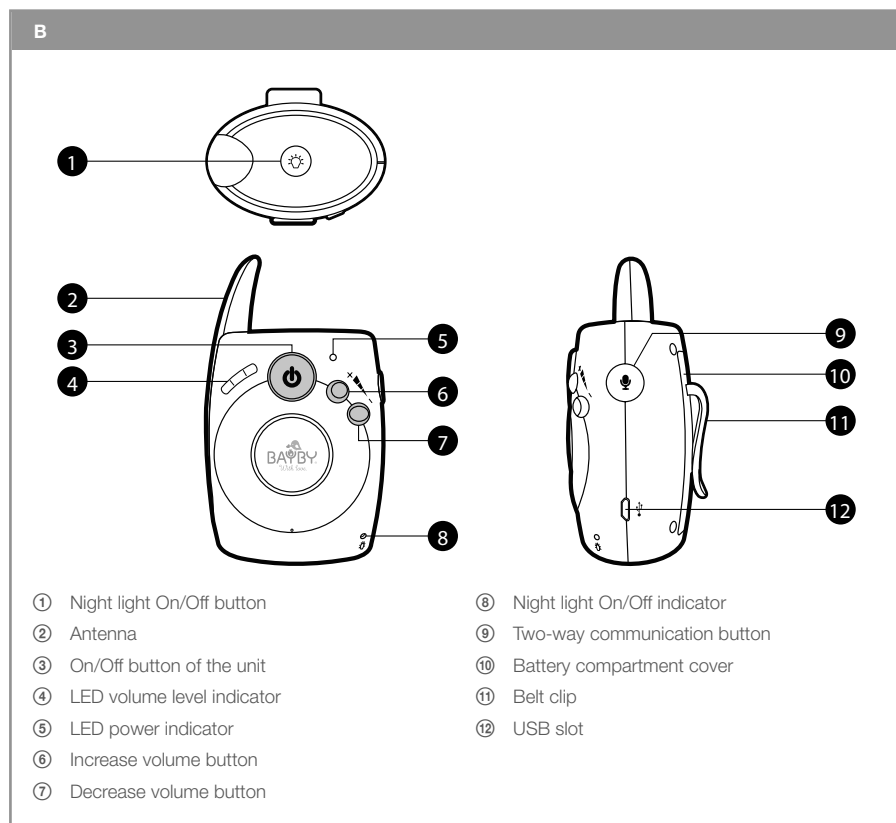
## Included contents

- Carefully unpack the baby monitor and take care not to throw away any part of the packaging before you find all its parts.

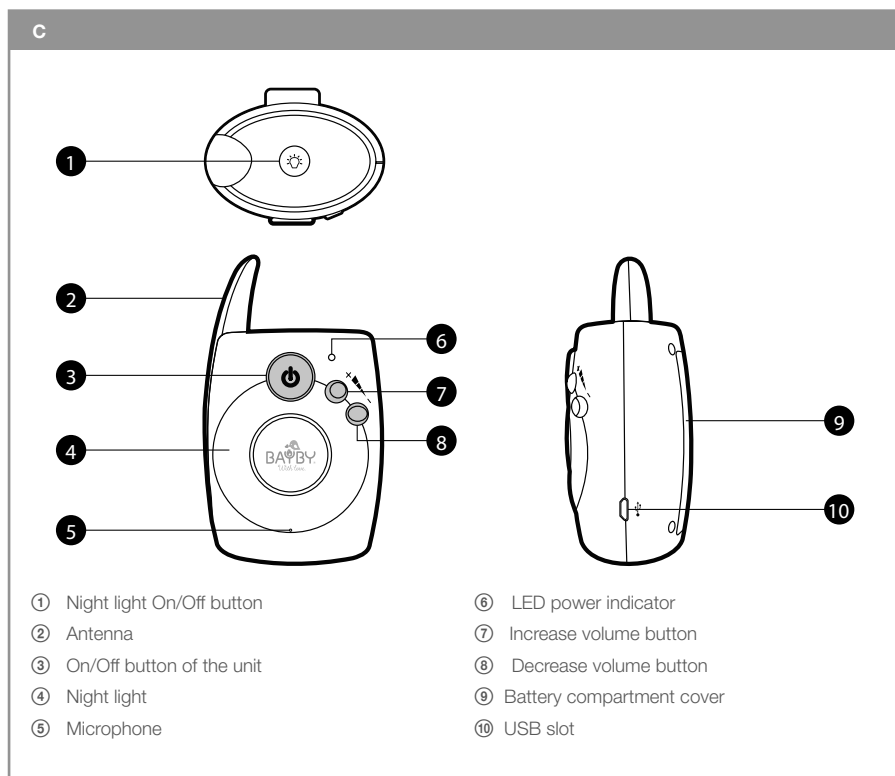




## Description of the parent unit



## Description of the baby unit



## Power supply

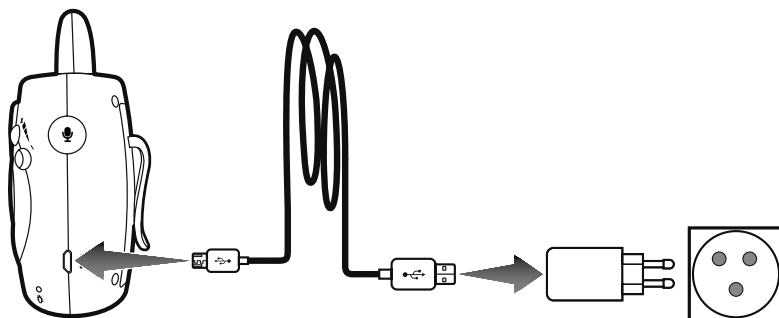
- The baby monitor can be powered directly from the power grid using the supplied USB power cable and an external USB interface (e.g. your computer, USB hub, powerbank, etc.) or via a commonly available USB adapter, connected to a power socket.
- Another power source is from standard disposable or rechargeable batteries type AAA (3x 1.5 V per unit).
- The baby monitor is not a battery charger.



### Info:

The supplied USB power cables **A3** and **A4** are identical and interchangeable between both units. The power supply for the units is also identical.

## Power supply from the mains



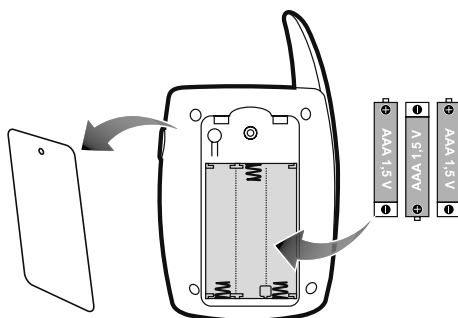
- Insert the end of the USB cable **A3 (A4)** into the USB slot **B12 (C12)** on the unit. Connect the other end to an external USB interface or via a USB power adapter to a power socket.



### Attention:

If you decide to power the units using the USB power cables, and batteries are inserted in both the units, first take them out of both the units.

## Power supply from batteries



- If the unit is connected to the power grid, disconnect it before inserting the batteries.
- Screw out cover **B10; (C9)** on the back of the unit. Place type AAA batteries (3x 1.5 V) into the battery compartment. When inserting the batteries, make sure that you maintain the correct polarity, which is marked inside the battery compartment. Then screw the battery cover back on.

## Low battery voltage indicator

- If the batteries have the correct voltage, the LED indicators **B5** or **C6** are lit green on both the units after they are turned on.
- When the batteries have a sufficiently low voltage, the LED indicators will be lit orange and later red. When this happens, replace or recharge the batteries as soon as possible, or connect the units via USB power cables to a power source.

## Installation location of the units

### Parent unit

- Put the parent unit **A1** in the room where you will be located. When the parent unit is to be powered from the grid, locate it within reach of a power socket.

### Baby unit

- Locate the baby unit **A2** within reach of a power socket on an even, dry and stable surface in the room where you want to monitor your child. We recommend an elevated location (e.g. chest of drawers or a shelf) at a sufficient distance away from equipment and devices that could cause signal interference.
- Locate the baby unit at least 1.5 m away from your child to minimise the effects of electro-smog.



#### Attention:

Never locate the baby unit or the USB power cable in the baby's bed or within your child's reach.

## Incorrect distance between the units

- If the parent unit is located too far from the baby unit, it will beep and the LED volume level indicator **B4** will start flashing. If this happens, reduce the distance between the parent unit and the baby unit.
- If the parent unit is located too close to the baby unit, you may hear an unpleasant audio noise or a high-tone sound. If this happens, move the parent unit farther away from the baby unit, or reduce the volume level on the parent unit.

## General information about using the baby monitor

- Before using the baby monitor for monitoring your child, always check that both the baby and parent unit and are in working order, that there is a connection between the units and that audio is being transmitted. In the event that there is no connection between the baby and parent unit and (the baby unit is turned off or out of signal range), the LED indicator **B4** will start flashing and sound an acoustic alarm signal (beeping).
- The sound detected by the baby unit is transmitted to the parent unit. LED indicator **B4** will inform you about audio transmission. This will be particularly useful when the parent unit **A1** is set to a low volume.
- To increase the signal range, place the baby unit **A2** in an elevated location as close as possible to the door or window.
- Other radio waves may interfere with the signal transmission. For this reason, do not place the baby monitor in the vicinity of appliances such as e.g. a microwave oven or WLAN devices, etc.

- The following factors may interfere with the signal or reduce its range:
  - one of the units is covered,
  - obstacles in the signal transmission direction such as furniture, walls, trees, etc.
  - weather events such as fog, rain, etc.

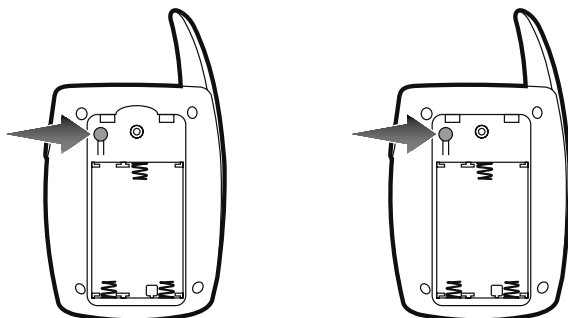
## Turning the parent unit on and off

- To turn on the parent unit, press button **B3**. The LED indicator **B5** will be lit.
- If the baby unit is not turned on, an audio signal (beeping) will be made and the LED indicator **B4** will start flashing.
- To turn off the parent unit, press button **B3** and hold it down for longer than 3 seconds. LED indicator **B6** will turn off and LED indicator **B9** will light up for a moment and then turn off.

## Turning the baby unit on and off

- To turn on the baby unit, press button **C3**. The LED indicator **C6** will be lit.
- To turn off the baby unit, press button **C3** and hold it down for longer than 3 seconds. The LED indicator light **C6** will turn off.
- When you have finished using it, always turn off the baby unit and disconnect the USB power cord from the power source.

## Pairing the parent and baby units



- Under normal circumstances, both units are already paired at the factory. In the event that you are unsuccessful establishing a connection between the parent and baby unit, proceed as follows:
  - on both units, screw out the battery compartment cover.
  - connect the units to the power grid
  - turn both units on
  - simultaneously press the pairing buttons on both units and hold them down for a few moments.

## Setting the volume intensity

- A unit's volume can be increased using buttons **B6** and **B7** on the parent unit or buttons **C7** and **C8** on the baby unit. The volume setting on the baby unit is confirmed by the LED indicator of the volume level **B4** being lit on the parent unit.

## Two-way communication function

- The two-way communication function can be used to comfort and calm down your child.
  - if you wish to talk to your child, hold down button **B9** on the parent unit.
  - if you wish to listen to your child again, release button **B9**.

## Night light

- The night light provides your child with a gentle, calming light that will enable you to check on it without having to turn on the main light in the room. The light can be turned on either directly on the baby unit or remotely on the parent unit.
- Turning the light on and off on the parent unit:
  - Press button **B1**. The night light **C4** will be lit on the baby unit and LED indicator **B8** will be lit on the parent unit. Press button **B1** again to turn off the night light.
- Turning on the night light on the baby unit:
  - Press button **C1**. The night light **C4** will be lit and LED indicator **B8** will be lit on the parent unit. Press button **C1** again to turn off the night light.

## ECO mode

- The baby monitor automatically switches to ECO mode when no audio is being transmitted. This reduces the transmission power to minimum to ensure power efficient operation and limits unnecessarily exposing your child to radio transmissions.

## Troubleshooting

- **Loud audio noise or a high tone beep is coming from the parent unit**
  - The parent unit is located too close to the baby unit. Move the parent unit farther away from the baby unit.
  - When powering the units using batteries, check that the power supply LED indicator **B5** or **C6** is not lit orange or red. If so, it is necessary to replace or recharge the batteries.

- **The parent unit is sounding an alarm signal (beeping).**
  - Check that the baby unit is turned on.
  - Check that the baby unit is connected to a power socket.
  - When powering the baby unit using batteries, then the batteries may be flat. Replace them with a new ones.
  
- **The parent unit remains mute or very quiet**
  - No noise is being made in the vicinity of the baby unit (e.g. when your child is calmly sleeping), the baby unit switches to ECO mode to save power. As soon as a sound is made in its vicinity, the unit again switches to full operation.
  - The volume set on the parent unit is too low. Set a higher volume using button **B 6**.
  
- **Weak signal, signal interference or the connection is repeatedly interrupted.**
  - If there is any equipment located in the signal transmission direction, e.g. a microwave oven, move it elsewhere or turn it off.
  - Check whether there are any obstacles in the signal transmission direction. Move the units so that a permanent connection is made.
  - Check that the units are within the signal range.

## Cleaning and maintenance

- Before cleaning the units, always disconnect them from the power socket. If they become soiled, wipe the external parts of the baby and parent units using a cloth lightly dampened in lukewarm water. Then wipe everything so that it is thoroughly dry.
- To clean the USB power cable, use a clean, dry cloth.
- For cleaning, do not use abrasive cleaning products, solvents, thinners, etc. Never submerge the parent and baby units, including the USB power cables in water or rinse them under running water.

## Technical specifications

Model number .....	BBM 7005
Frequency broadcast band .....	2,400–2,480 MHz
Number of channels .....	32
Transmission power .....	17 dBm
Range in open space.....	up to 300 m
Audio transmission .....	two- way communication
Power source:	
Input.....	5 V, 1000 mA
or	
Batteries for parent unit .....	3 × 1.5 V (type AAA)
Batteries for baby unit.....	3 × 1.5 V (type AAA)
Electrical shock protection class .....	II
Operating temperature (may be limited by the operating temperature of the batteries) .....	0–50 °C

## Disposal of used batteries

Do not dispose of old batteries with regular household waste. Dispose of batteries at designated battery disposal points.

## Instructions and information about the handling of used packaging

Dispose of used packaging material at a site designated for waste in your municipality.

FAST ČR hereby declares that radio device model number BBM 7005 is in compliance with directive 2014/53/EU.

The full wording of the EU Declaration of Conformity is available at the website: [www.bayby.cz](http://www.bayby.cz)

The Czech language is the original version of the user's manual.

## Explanation of symbols used on the product, its accessories and packaging

This symbol indicates that this appliance meets all the basic requirements of EU directives related to it.



This appliance meets all the basic requirements of EU directives related to it.



Product with protection class III: Electrical shock protection is provided by separated extra-low voltage (SELV).



This symbol indicates that it is a product that may be used indoors.



This symbol on products or original documents means that used electric or electronic products must not be added to ordinary municipal waste. For proper disposal, renewal and recycling hand over these appliances to determined collection points. Alternatively, in some European Union states or other European countries you may return your appliances to the local retailer when buying an equivalent new appliance. Correct disposal of this product helps save valuable natural resources and prevents potential negative effects on the environment and human health, which could result from improper waste disposal. Ask your local authorities or collection facility for more details. In accordance with national regulations penalties may be imposed for the incorrect disposal of this type of waste.

For business entities in European Union states

If you want to dispose of electric or electronic appliances, ask your retailer or supplier for the necessary information.

Disposal in other countries outside the European Union.

This symbol is valid in the European Union. If you wish to dispose of this product, request the necessary information about the correct disposal method from the local council or from your retailer.

Changes to text and technical parameters are reserved.